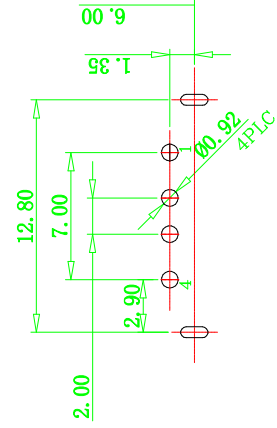
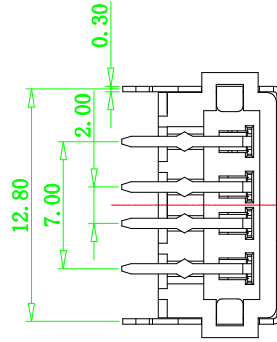
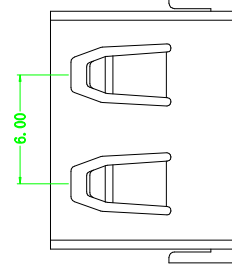
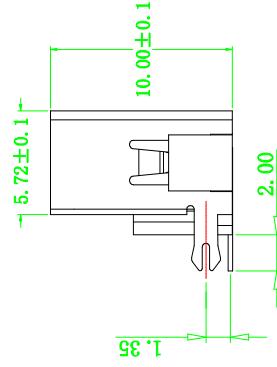
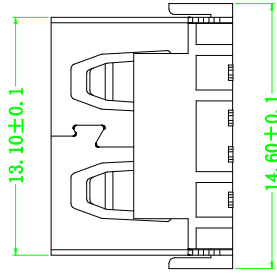


SECTION A-A



P.C.B LAYOUT

**规格说明: Specifications:**  
**电气特性: Electrical:**

1. 额定电流: Current Rating  
1.5A/contact terminal
2. 额定电压: Voltage Rating  
30V DC
3. 接触阻抗: Contact Resistance  
30 milliohms MAX
4. 耐压: Dielectric Withstanding Voltage:  
500 V AC AT Sea Level
5. 绝缘阻抗: Insulation Resistance:  
1000MEGA ohms MIN

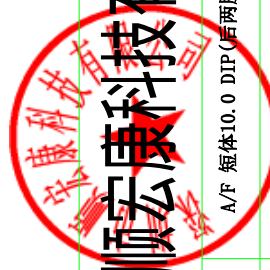
**物理性能: Mechanical:**

1. 插拔力: Connector Mate and Unmate Force  
Mate force: 3.57kgf (MAX)  
Unmate force: 1.02kgf (MIN)
2. 端子保持力: Terminal Retention  
1.2kgf (MIN)

**原材料: Material:**

1. 塑胶: Housing:  
Hing Temperature Thermoplastics,  
U1 94V-0 PBT White/Black
  2. 端子: Contact: Copper Alloy C2680
  3. 外壳: Shell: Copper Alloy C2680/SPOC
- 电镀: Finish:**
1. 端子: Contact: Plated Gold in Mating Area;  
Tin On Solder Tails
  2. 外壳: Shell:  
Nickel Plating

# 深圳市顺宏康科技有限公司



A/F 短体10.0 DIP (后两脚无卷边H=6.8)

品名 (ITEM NO)  
料号 (PART NO)  
模号 (MODEL NO)

SHK-20094

A008-IN-2

图号 (DWG NO)	单位 (UNIT): MM
版本 (REV)	比例 (SCALE) 1:1
日期 (DATE)	
设计 (DESIGN)	
审核 (CHECKED)	
核准 (APPROVED)	

未注公差  
TOLERANCE UNSPECIFIED

X.X	±0.30
X.XX	±0.20
X.XXX	±0.10
X.X°	±5°
X.X'	±2'