

规格说明: Specifications:
电气特性: Electrical:

- 额定电流: Current Rating
1.5A/contact terminal
- 额定电压: Voltage Rating
30V DC
- 接触阻抗: Contact Resistance
30 milliohms MAX
- 耐压: Dielectric Withstanding Voltage:
500 V AC AT Sea Level
- 绝缘阻抗: Insulation Resistance:
1000MEGA ohms MIN

物理性能: Mechanical:

- 插拔力: Connector Mate and Unmate Force
Mate force: 3.57kgf (MAX)
Unmate force: 1.02kgf (MIN)
- 端子保持力: Terminal Retention
1.2kgf (MIN)

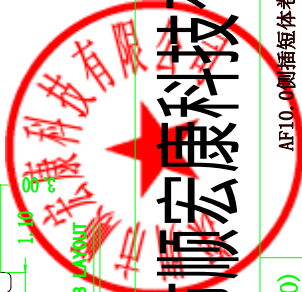
原材料: Material:

- 塑胶: Housing:
Hing Temperature Thermoplastics,
UL 94V-0 PBT White/Black
- 端子: Contact: Copper Alloy C2680
- 外壳: Shell: Copper Alloy C2680/SPCC

电镀: Finish:

- 端子: Contact: Plated Gold in Mating Area;
Tin On Solder Tails
- 外壳: Shell: Nickel Plating

深圳市顺宏康科技有限公司



品名 (ITEM NO)	AF10.0侧插短体卷边
料号 (PART NO)	SHK-20082
模号 (MODEL NO)	A008-1I-4

图号 (DWG NO)		单位 (UNIT):	MM
版本 (REV)		比例 (SCALE)	1:1
日期 (DATE)		公差	未注公差
设计 (DESIGN)		TOLERANCE UNSPECIFIED	
审核 (CHECKED)		X.X	±0.30
核准 (APPROVED)		X.XX	±0.20
		X.XXX	±0.10
		X°	±5°
		X.X°	±2°